



Responsibilities

- Conduct the races in accordance with the PJYC Sailing Instructions and the Racing Rules of Sailing
- Insure safety of the races
- Select and set course
- Time start – record start time
- Assure all checked in yachts don't cross early nor too late
- Record finish times
- Score the event

- Also responsible to check out committee boat before race and make sure she is secure post race

Course Selection

WIND DIRECTION	COURSE
337.5 - 22.5	N
22.5 - 67.5	NE
67.5 - 112.5	E
112.5 - 157.5	SE
157.5 - 202.5	S
202.5 - 247.5	SW
247.5 - 292.5	W
292.5 - 337.5	NW

**Choose Course Length based on AVERAGE EXPECTED
Wind Speed during the race.
Check the forecast!**

WIND SPEED	LENGTH #
4 - 6	1
7 - 9	2
10+	3

(Note: Changed Ranges from 2017!)

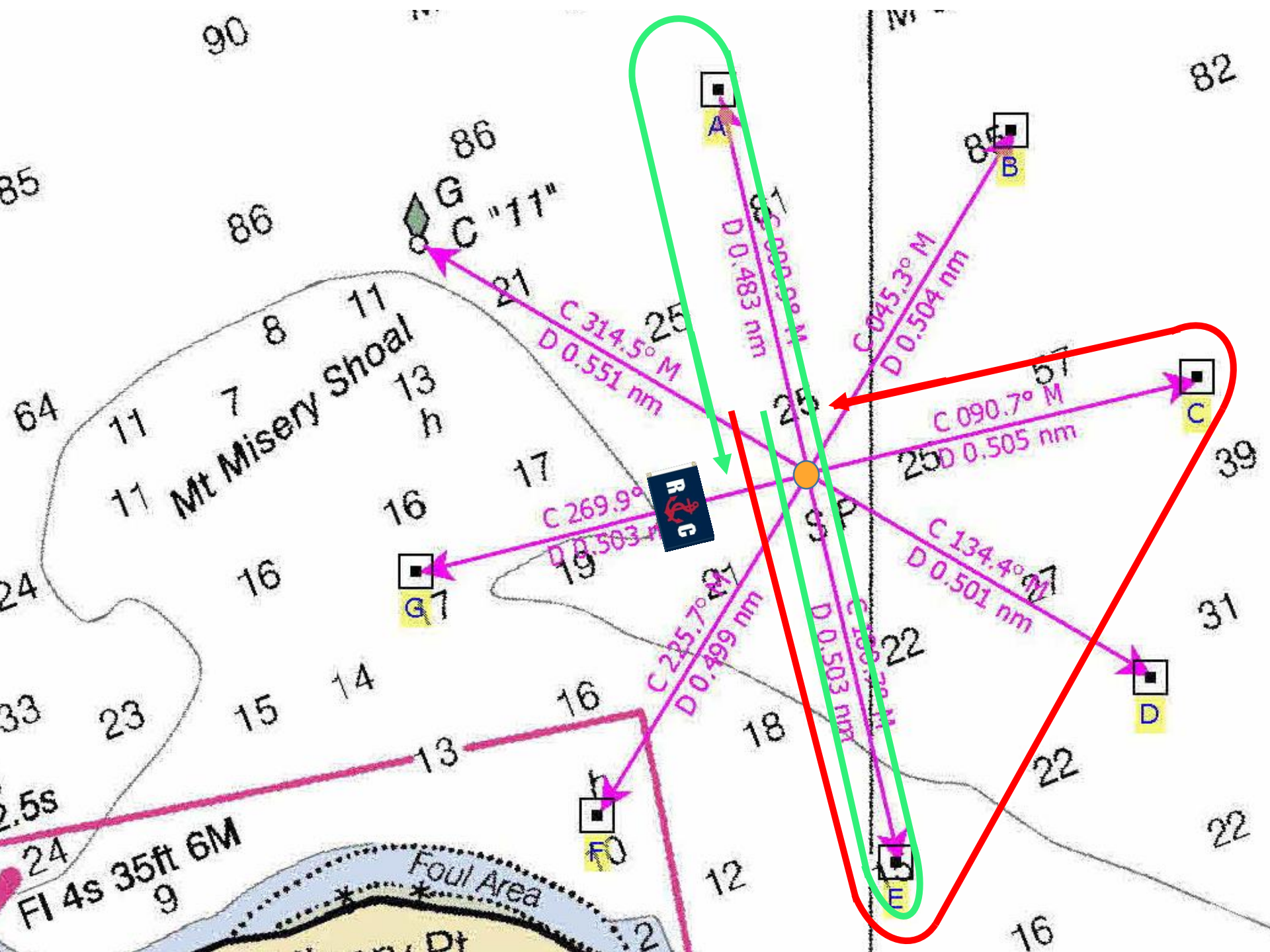
Course Selection

Example:

Wind out of Southwest.

At start, wind is about 5 kts, but expected to build to 10.

Post “SW2” and call “Southwest 2”



Course S-1
 Expecting 4-6 kts

Spin █

Non Spin █

Coordination and Communication

- VHF 72 will be used for all radio communications.
- We use the radio since many boats race under-crewed and do not have a designated tactician to watch flags etc... (All major races and clubs now use radio calls.)
- Use standard flag signals also!
- Checkins should NOT be by radio. (See next slide)
- Pre-Start: Announce Course (Southwest 2, etc...) by Radio AND by posting on course side of committee boat.
- Start: Call pre-start countdown via radio at the one-minute marks, after any sound signal ("That was the 1 minute signal for spin boats"). Then at the 10 second marks in the last minute. Then the last 10 seconds to the division start.

Checking In

- Racing skippers need to sail past the stern of the committee boat and hail the committee with
- **yacht name** and
- **division.**

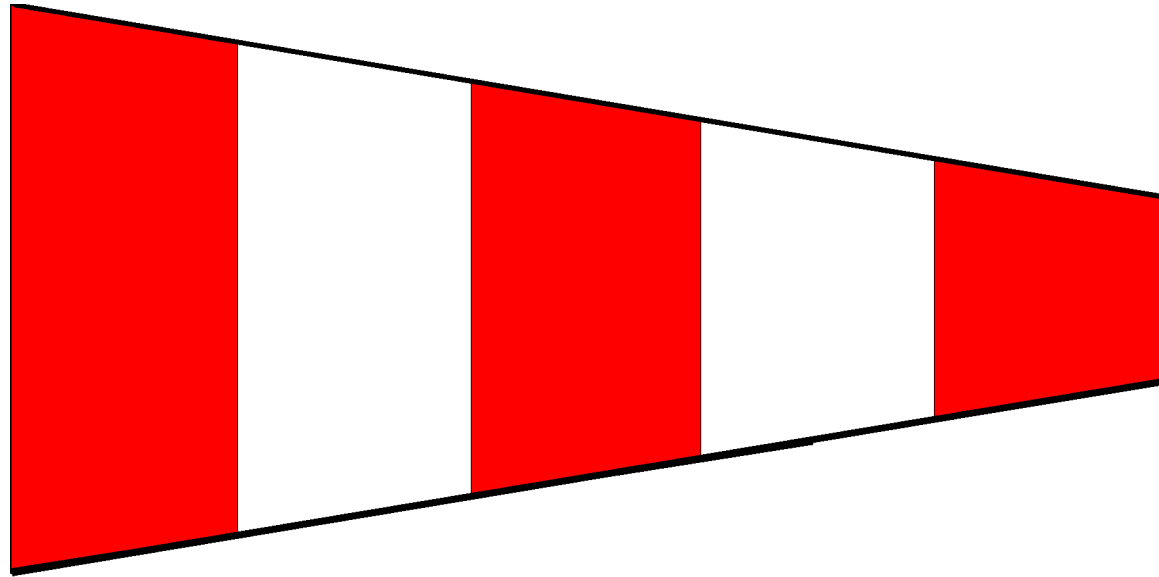
“Harvest Moon Checking In for Non-Spin”



Hailing by radio can interfere with important announcements from the PRO!

Postponement

If postponement is necessary because of wind or weather fly AP flag and make TWO short sound signals. The start clock has a 'Horn' button.



- Announce the delay via Radio.
- Announce any intentions, such as to attempt a start at a certain time, or general 'wait for wind' etc.. Via radio.
- When ready to proceed: Drop AP flag and make ONE short sound signal. Announce via radio.
- 5 minute warning should be ONE MINUTE after dropping the AP flag.
- Announce restart intentions via radio.

Record Start Time, Course, and race distance on score sheets.

Race Finish Sheet : : Port Jeffers Yacht Club Regatta

Race # _____ **Date:** _____ **Start Time:** _____ **Length/Distance:** _____

Course: _____ **Wind Speed:** _____ **Wind Direction:** _____ **Recorded by:** _____

Finish	Bow / Sail#	Finish Time	Notes	Sail#	Boat Name	Boat Type	Hull Color
1.				?	Senta	Non-Spinnaker	
2.				10	Clara J	Non-Spinnaker	
3.				72	SPIRITUS	Non-Spinnaker	
4.				45145	Giusto	Non-Spinnaker	

Actual 'Start' clock time when countdown goes to zero.

Starting Sequence

Note: The Starting Clock will sound the signals automatically.

FIVE short Sounds to 'alert' 1 minute before first class sequence starts (6 minutes prior to start.)

- At 5 minutes prior to start raise 'Class' flag for 'Warning' with **short** sound signal.



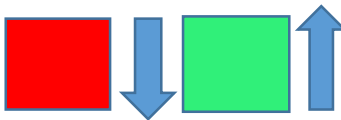
- At 4 minutes prior to start raise 'Preparatory' ('P', aka 'Papa') flag with **short** sound signal



- At 1 minute to start lower Prep (P) flag with **long** sound signal



- At 0, lower class flag with one **short** sound signal (this is the start) Immediately raise the class flag for the next start.



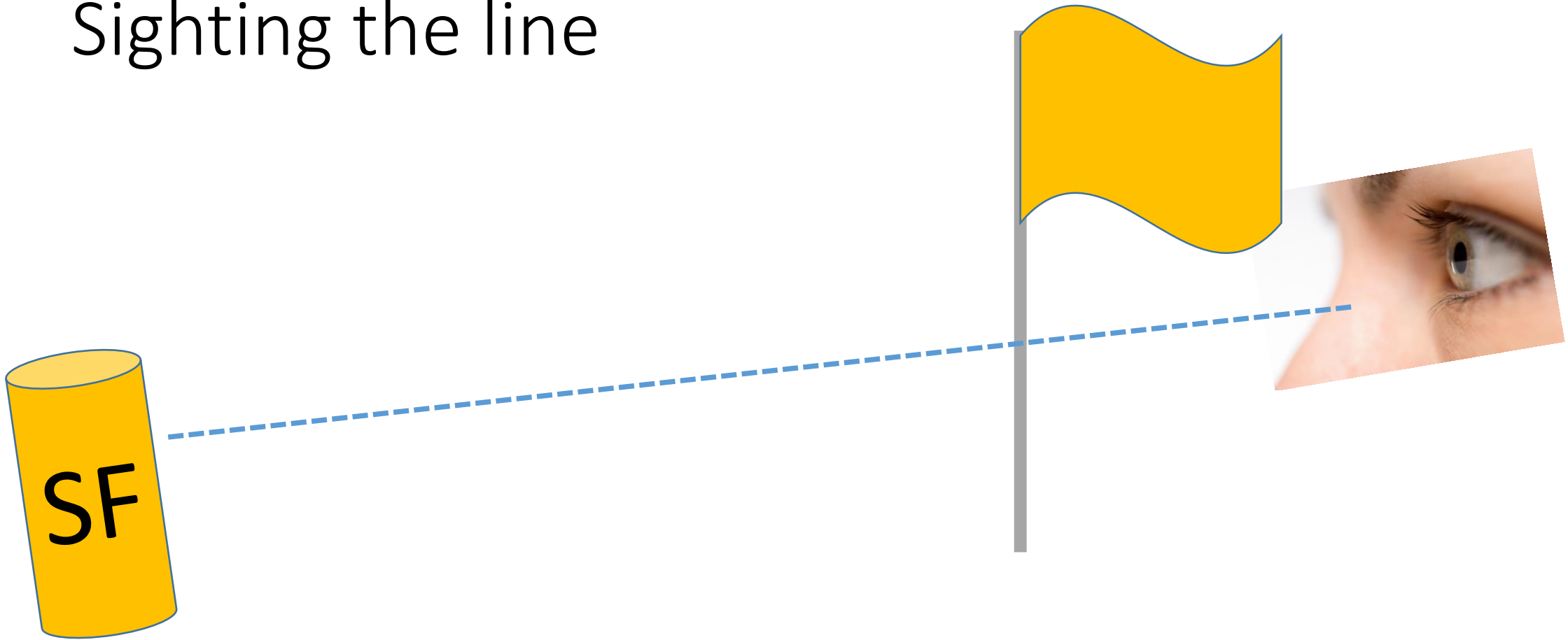
- Go thru the same timing sequence (from 5 to 0) until all the classes are racing. This is called a 'Rolling Start'. So the start of one division is the 5 minute warning of the next division. The on board starting clock has this mode built in.

iStart Automatic Starting clock

- POWER button – Press to turn ON, hold to turn OFF.
- MODE button – Press to see details of currently selected mode, hold 3 seconds to select desired mode (Mode **53** is the 'Rolling Start' with an alert signal one minute before the first division warning).
- HORN button – Press to sound the horn manually.
- START button – Press to start a race sequence, hold for 3 seconds to reset and stop.
- After last division starts, power off to stop the 'Rolling Starts', then power back on so you have horn control.



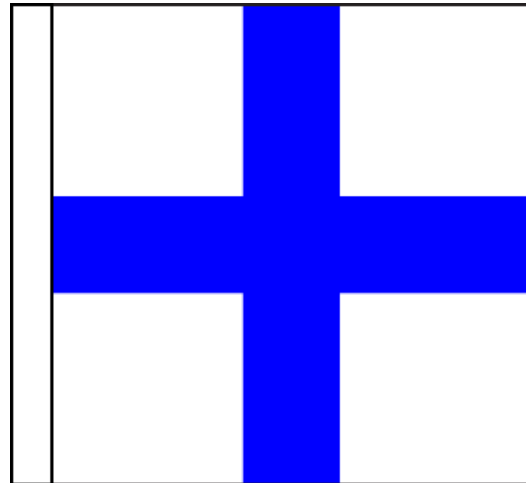
Sighting the line



The race officer needs to sight the line as boats approach to see if any need to be recalled for crossing early.

Boats over early – Individual Boats

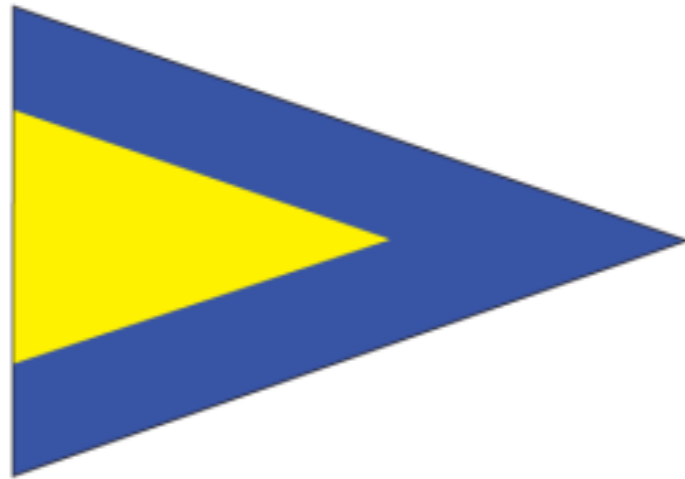
If boats are over early – Raise individual recall (X) flag promptly with one sound signal and hail numbers and names of boats over early via radio.



Keep (X) flag up until all boats are clear or for 4 minutes, whichever comes first. Boats over early must simply sail entirely below the starting line and re-cross the start.

Boats over early – Many Boats

If more than a couple of boats are over early, You can call a 'General Recall'. Sound TWO short sound signals and announce via radio. Put up the 'First Substitute' flag:



Keep (First Substitute) flag up until all boats are clear or for 4 minutes, whichever comes first. Make ONE short sound when removing it, and restart the starting sequence ONE MINUTE later.

The Finish

- Finish Time: When any part of the boat or crew in normal operating position crosses the line **from the course side**.
- Exception: If a penalty is incurred while finishing (hits SF for example), she must take the penalty (360 for example) and re-finish.
- Sound ONE **short** signal for each boat as they finish.
- The PRO should sight the line, and call the boat name or sail number. Another committee member must record the time.
- Use a LARGE timer display. Such as a tablet or Cell phone with a visible display. Be careful of devices that time out! There are many apps to display large clocks. Record the actual time of day to the second.
- Our new Racing Web system (US Sailing's RegattaNetwork) can print these out.

Record finish times on score sheets.

Race Finish Sheet : : Port Jefferson Yacht Club Regatta

Race # _____ Date: _____ Start Time: _____ Length/Distance: _____							
Course: _____ Wind Speed: _____ Wind Direction: _____ Recorded by: _____							
Finish	Bow / Sail#	Finish Time	Notes	Sail#	Boat Name	Boat Type	Hull Color
1.				?	Senta	Non-Spinnaker	
2.				10	Clara J	Non-Spinnaker	
3.				72	SPIRITUS	Non-Spinnaker	
4.				45145	Giusto	Non-Spinnaker	

Actual 'Clock' Times. Not elapsed.

- Username and password: Not needed for skippers. Contact Dave Hubbard (davechub@gmail.com) if you need these for Committee purposes.
- Select 'Manage This Event' for the regatta in the 'View Events' page.

:: Club Management

Club Information
Club Tools & Web Applets
Terms of Use

:: Event Management

View Events
Create A New Event

:: Help & Resources

Tutorials & Guides
Tips, Tricks Blog
Support Desk

**Port Jefferson Yacht Club
Events for 2018**

Jump To: 2018

Start Date	End Date	Event	
06/16/18	06/16/18	Port Jefferson "Harbor Cup" Regatta	Manage This Event
05/29/18	07/10/18	Tuesday Night Spring Series	Manage This Event
07/17/18	08/28/18	Tuesday Night Summer Series	Manage This Event

A variety of options are available:

Check-in and finish sheets

Scoring back at the Club

::Event Tools::

- Edit Event Information
- Edit Event Fees
- Edit Event Entries
- Manage Fleet/Class Assignments
- Manage Fleet Divisions
- Event Email Console
- Event SMS Text Console
- Event Notice Board Console
- Event Crew Board
- Upload Event Documents

::Event Forms & Reports::

- Print Entry Forms [+]
- Print Check-In Sheet
- Print Check-In Sheet By Fleet
- Print Finish Sheet
- Print Finish Sheet By Fleet
- Print Fleet Split Sheet
- Launch Registration Report Tool
- Launch Merchandise Report Tool
- Download Registrant Data Feed

::Event Scoring::

- Score This Event Online
- Protest Hearing Console
- View Results

- Export Registrants for Javascor
- Export Registrants for St. Pete's
- Export Registrants for Scoring
- Export Registrants for Sailwave
- Export Registrants for Quick Score

::Custom Links::

- Entrant Check-In Sheet (Legal Landscape Format)
- Entrant Check-In Sheet (with Boat Name)
- Alt. Entrant Check-In sheet (Helm Last, First)
- Multi-Registration Fee Check-In Sheet
- Medical Condition & Medications
- Custom Question Report
- Emergency Contact Report
- Jury Contact Report
- Entrant Address Report (Copy to Excel)
- Entrant Age Report
- T-Shirt Report (Entrant)
- Apply Laser/Opti Divisions to Registrants
- Race Results by Division
- Pursuit Race Start Sheet
- Scrolling Results Page
- Scrolling Race Results Page
- (Note:** Change race_num in URL to desired race)
- Manage Event Coupons
- Registrant Copy Utility
- ISAF Classification Report (Corinthian Divisions)
- (How to user QR Check-in System)*
- Mobile Friendly QR Checkin

See Scoring Tutorial Video:

List of tutorial videos



:: Event Management

View Events
Create A New Event

:: Help & Resources

Tutorials & Guides
Tips, Tricks Blog
Support Desk

? LIVE HELP OFFLINE

See: 'Introduction to Scoring One-Design & Handicap Regattas' (About 9 minutes)

There are also guides with scoring tips when using an iPad and mobile phones.