



# PJYC 'Village Cup' Regatta

Sunday, September 20<sup>th</sup>, 2026

## SAILING INSTRUCTIONS

Update: June 2, 2026

### 1. RULES

- 1.1. This race will be governed by the rules defined in *The Racing Rules of Sailing* ("RRS"), including *US Sailing Prescriptions*.
- 1.2. **Rule Change:** The Finishing Line is changed to use an Orange flag on the Committee Boat as one end of the line. This changes RRS "Race Signals"/"Other Signals" in the flags section at the end of the RRS, which specifies a blue flag..
- 1.3. **Radio:** Each boat will carry a VHF radio capable of sending/receiving on marine channels 16 and 72, and will monitor channel 72 continuously as that is the channel the Race Committee will use to coordinate the race.

### 2. CHANGES TO THE SAILING INSTRUCTIONS

- 2.1. Any change to the sailing instructions will be emailed before 1900 the day before the race.
- 2.2. Changes to these Sailing Instructions may be made on the water. The Race Committee will broadcast to all boats on **VHF 72**.

### 3. COMMUNICATIONS WITH COMPETITORS

- 3.1. Notices to competitors, including these SIs, and race status updates, will be emailed to skippers and will be in your skipper's bag (with water and streamers). And will be available in print the morning of the event in a clear box in front of the club Dock House. They will also be on the PJYC Website here:  
<https://portjeffersonyachtclub.com/race-program/village-cup-race/>
- 3.2. On the water, the race will be coordinated on **VHF channel 72**.
- 3.3. From the first warning signal until the end of the race, except in an emergency, a boat shall not make voice or data transmissions and shall not receive voice or data communication that is not available to all boats.
- 3.4. **Boats retiring from the race** must contact the Race Committee on **VHF channel 72**.

#### 4. **CODE OF CONDUCT**

4.1. Competitors and support persons shall comply with reasonable requests from race officials.

#### 5. **SIGNALS MADE ASHORE**

5.1. Signals made Ashore will be announced at or near the PJYC Dock House.

5.2. When flag AP is made ashore, '1 minute' is replaced with 'not less than 60 minutes' in RRS 'Race Signals'/'AP' at the end of the RRS book.

#### 6. **SCHEDULE OF RACES**

6.1. One race is planned for Sunday June 20<sup>th</sup>, 2026 with the first division warning at 1300.

6.2. The race distance will be set for an approximate duration of 1 to 1.5 hours for the fleet average based on wind conditions.

#### 7. **DIVISION FLAGS**

7.1. There will be three Non-Spinnaker divisions. No spinnaker divisions.

Division A: Green Flag.



Division B: Blue Flag.



Division C: Red Flag.



Division assignments will be made by the Race Committee and shall appear on the *SCRATCH SHEET*. Division STREAMERS will match these colors.

#### 8. **RACING AREA**

8.1. The racing area is approximately 1.5 nm NE of the Port Jefferson Harbor East Breakwater. Mark 'X' will usually be used as one end of the Start/Finish line, with the Committee Boat at the other end. (See Appendices A and B)

#### 9. **COURSES**

9.1. A Chart of the course area and marks is in Appendix A below. This is the PJYC standard weekend course area.

9.2. ALL Marks will be left to PORT unless otherwise specified by the RC.

9.3. The course will be posted on the starboard side of the Committee Boat (**CB**) based on the letter of the marks being used and announced on VHF channel 72. Example: "G C A G" Would mean: "Start between the CB and X (or designated mark), then to the first mark G, then to C, then to A, then to G, and then back to the finish line which is the same as the starting line".

9.4. We normally use mark X for the end of the start and finish lines. HOWEVER, the race committee may change that based on conditions, so look for the RC Boat and listen on VHF 72 for instructions in the event of changes.

#### 10. **MARKS**

10.1. The possible Marks are listed in Appendix B below with coordinates.

## 11. THE START

- 11.1. The starting line will be between mark 'X' (or designated alternate) and an orange flag on the Committee Boat.
- 11.2. The race will use the standard Rule 26 starting sequence.
- 11.3. Divisions after the first will have their warnings one minute after the prior division start signal (One minute gap). So, the start signals are (Unless there is a postponement):

Division A: Warning: 1300	Start: 1305
Division B: Warning: 1306	Start: 1311
Division C: Warning: 1312	Start: 1317
- 11.4. Boats whose warning signal has not been made shall avoid the starting area during the starting sequence for other divisions.

## 12. THE FINISH

- 12.1. The finish line will be between the 'X' (or designated alternate) mark and an ORANGE flag staff on the committee boat. This changes RRS "Race Signals"/"Other Signals" in the flags section at the end of the RRS. (Which specifies a blue flag)

## 13. TIME LIMITS

- 13.1. The 'Finish Time Window' ends at 1500 (3 PM). Boats which have not *finished* by this time will be scored DNF (Did Not Finish). This allows all boats to get back in time for the Village Cup events at the Village Center.

## 14. SAFETY REGULATIONS

- 14.1. ALL BOATS MUST CHECKIN by sailing by the Committee Boat and calling out "<boat name> checking in with # souls on board". Please avoid using the Radio for checking in, if possible, as calls can 'step on' each other, unless you are not able to get close to the RC Boat due to congestion.
- 14.2. A boat that retires from a race shall notify the race committee on **VHF 72** at the first reasonable opportunity.

## 15. RISK STATEMENT

- 15.1. Competitors participate in the regatta entirely at their own risk. See rule 3 of the RRS, Decision to Race. The organizing authority will not accept any liability for material damage or personal injury, or death sustained in conjunction with, prior to, during, or after this event.

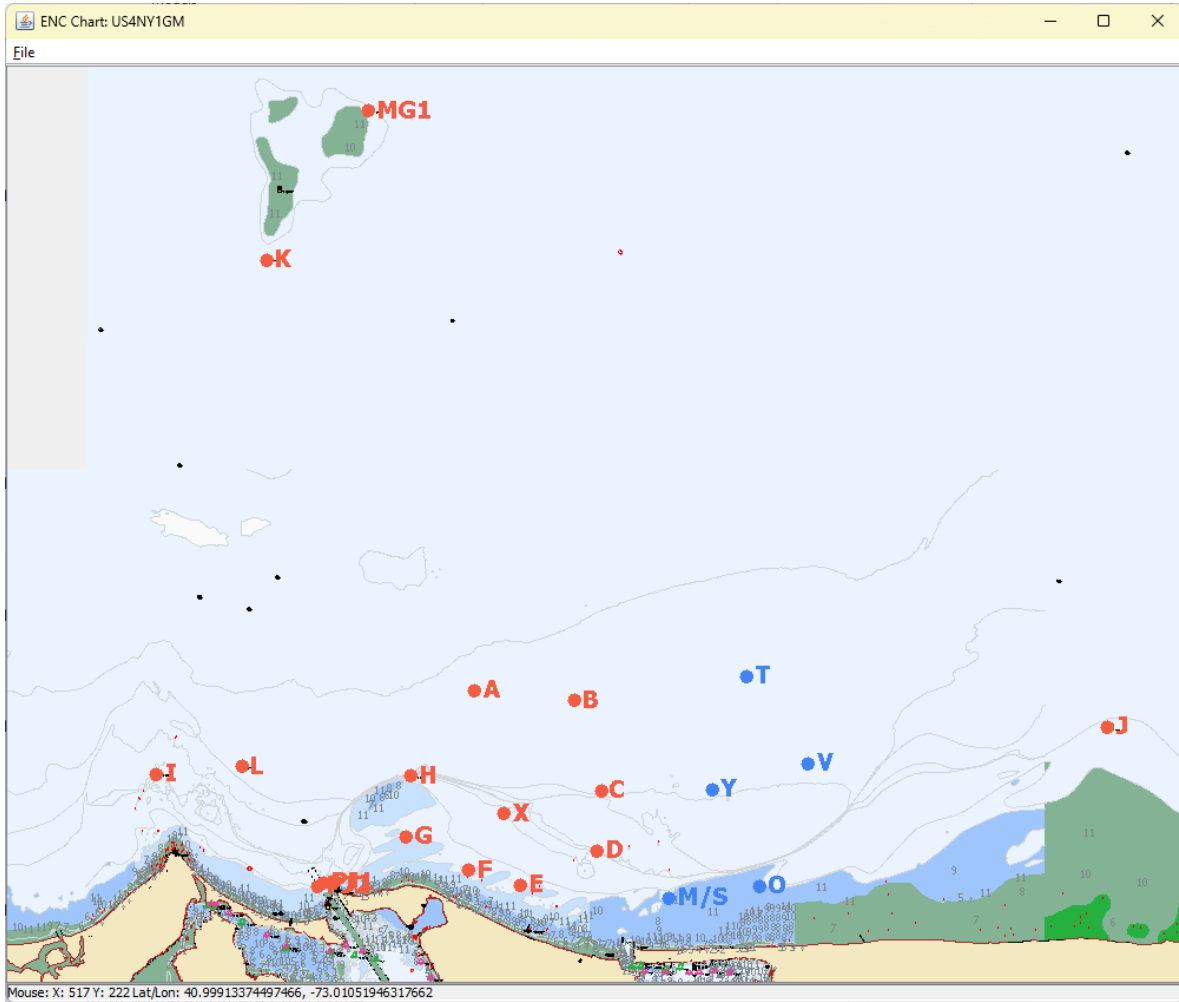
## 16. FURTHER INFORMATION

Dave Hubbard  
PJYC Fleet Captain - [davechub@gmail.com](mailto:davechub@gmail.com) - 1-516-313-7617

Charlie Masone  
Principle Race Office (PRO) - [charlie.masone@gmail.com](mailto:charlie.masone@gmail.com) - 1-631-578-2857

# APPENDIX A

## Course Area Chart



BLUE Marks are MSSA Marks. The RC may use these.

## APPENDIX B Marks

**Note 1:** The 3 formats are all the same location for each mark, just in the 3 most commonly used notation. Negative longitudes are also called 'West' in some systems.

**Example:** '-73 04.210' is the same as '73 04.210W'.

**Note 2:** Marks 'X' and 'A' thru 'H' are the marks used for the Tuesday Night Series. The others are used on weekends for longer courses. We will not be using the MSSA Marks (Which are the Mount Sinai Sailing Association marks)

**Note 3:** Marks C and D, shifted slightly during the 2025 season. A and B are back on station. Below are the corrected coordinates.

Name	Decimal Degrees		Decimal Minutes		Decimal Seconds	
	Latitude	Longitude	Latitude	Longitude	Latitude	Longitude
X (Center)	40.9820531	-73.0642112	40 58.923	-73 03.853	40 58 55.391	-73 03 51.160
A	40.9974366	-73.0690144	40 59.846	-73 04.141	40 59 50.772	-73 04 08.452
B	40.9961964	-73.0526051	40 59.772	-73 03.156	40 59 46.307	-73 03 09.378
C	40.9850167	-73.0484833	40 59.101	-73 02.909	40 59 06.060	-73 02 54.540
D	40.9778333	-73.0474333	40 58.670	-73 02.846	40 58 40.200	-73 02 50.760
E	40.9731457	-73.0614374	40 58.389	-73 03.686	40 58 23.325	-73 03 41.174
F	40.9749757	-73.0700011	40 58.499	-73 04.200	40 58 29.913	-73 04 12.004
G	40.9791921	-73.0802989	40 58.752	-73 04.818	40 58 45.092	-73 04 49.076
H (G 11)	40.9867283	-73.0795361	40 59.204	-73 04.772	40 59 12.222	-73 04 46.330
I (G 11a)	40.9869658	-73.1215089	40 59.218	-73 07.291	40 59 13.077	-73 07 17.432
J (G 9 Rocky Pt)	40.9928858	-72.9647172	40 59.573	-72 57.883	40 59 34.389	-72 57 52.982
K (R 2 S of Middle Ground)	41.0511211	-73.1034111	41 03.067	-73 06.205	41 03 04.036	-73 06 12.280
L (PJ Approach RW)	40.9878853	-73.1074167	40 59.273	-73 06.445	40 59 16.387	-73 06 26.700
N (R 18 SW of Stratford Pt.)	41.1136428	-73.1359492	41 06.819	-73 08.157	41 06 49.114	-73 08 09.417
MG1 (G 1 E of Middle Ground)	41.0697850	-73.0865439	41 04.187	-73 05.193	41 04 11.226	-73 05 11.558
PJ1 (G 1 PJ Entrance)	40.9734208	-73.0939856	40 58.405	-73 05.639	40 58 24.315	-73 05 38.348
PJ2 (R 2 PJ Entrance)	40.9729147	-73.0948975	40 58.375	-73 05.694	40 58 22.493	-73 05 41.631
LC (G LC Little Cows)	41.1222250	-73.2144489	41 07.334	-73 12.867	41 07 20.010	-73 12 52.016
M/S (MSSA Mark M/S)	40.9715667	-73.0369500	40 58.294	-73 02.217	40 58 17.640	-73 02 13.020
O (MSSA Mark O)	40.9730333	-73.0220333	40 58.382	-73 01.322	40 58 22.920	-73 01 19.320
T (MSSA Mark T)	40.9992000	-73.0242167	40 59.952	-73 01.453	40 59 57.120	-73 01 27.180
V (MSSA Mark V)	40.9882833	-73.0140000	40 59.297	-73 00.840	40 59 17.820	-73 00 50.400
Y (MSSA Mark Y)	40.9850833	-73.0297667	40 59.105	-73 01.786	40 59 06.300	-73 01 47.160